



An introduction to

Community Foundations for Lancashire & Merseyside

The Community Foundations for Lancashire and Merseyside

The Community Foundations for Lancashire and Merseyside (CFLM) helps individuals and organisations give to causes that matter to them where there is most need and where it has greatest impact. We work with a range of stakeholders including individuals, families, and businesses to ensure charitable giving is effective, informed, and transparent.

With strong local knowledge and trusted relationships, CFLM provides insight and expertise in charitable giving. We're part of a national network of 47 UK Community Foundations, and global movement of place-based giving that began over a century ago.

Community Foundations offer a reliable, accountable way to support good causes, backed by clear reporting and measurable outcomes. Our shared goal is to build stronger, fairer communities where everyone has the opportunity to thrive.



£77m+

Total Amount Awarded
Since Being Established



634

Grants Awarded
2024/25



150k+

Beneficiaries
2024/25



£3.1m+

Total Amount
Awarded 2024/25



Help organisations and individuals give to causes that matter to them, where there is most need and where it will have greatest impact.



Work with a range of donors: HNWI's, Corporates, Trusts, Public Sector bodies, National Charities and SMEs. Distributed in excess of £77m locally to enhance the lives of others.



Established in Merseyside 25 years and Lancashire 17 years.



Part of a global movement started over 100 years ago in the US. Currently there are approximately 1,800 CFs worldwide.

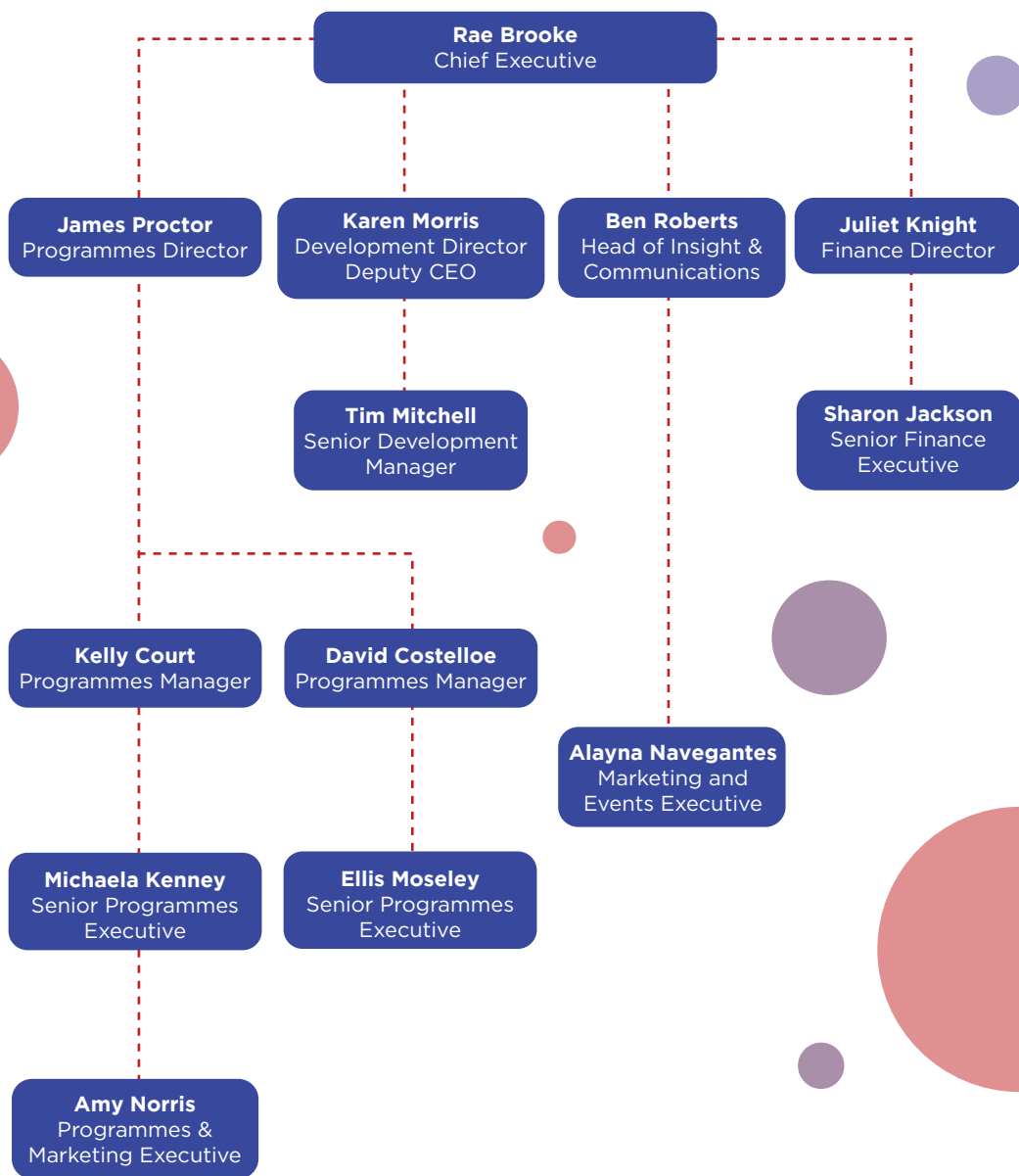


One of 47 accredited CFs in the UK. A national network that has distributed over £2.1bn to grass root community groups and charities.



Dedicated team of 14 with an office base in Lancashire and Merseyside.

The CFLM team



To find out more about our team visit:
www.lancsfoundation.org.uk or
www.cfmerseyside.org.uk

CFLM trustees



David Wareing
Chair of the Board
Retired Senior Partner Hill
Dickinson LLP



Ruj Dev
Treasurer
Chief Financial Officer of
Mills & Reeve



Andy Myers
Trustee
Retired Regional Head of
National Lottery Community Fund



Donna Howitt
Trustee
Place Strategy Director of
Liverpool ONE



Naz Zaman
Trustee
CEO of Lancashire BME Network



Neil Welsh
Trustee
Financial Planner at PM+M



Sarah Pickerill
Trustee
Head of People at
Carpenters Group



Ram Gupta
Trustee
CEO of Nybble IT Solutions



Philip Rooney
Trustee
Retired Liverpool Office Managing
Partner DLA Piper

To find out more about our team visit:
www.lancsfoundation.org.uk or
www.cfmerseyside.org.uk



Global movement

- 
- First Community Foundation established in 1914 in Cleveland, Ohio, USA.
 - Community Foundations are on every continent except Antarctica.
 - Over 1,800 Community Foundations worldwide.
 - With a unique understanding of local needs, we are experts in philanthropic insight, guidance and support.

UK coverage

- 47 accredited Community Foundations across the UK.
- Over £1.6bn distributed to charitable causes since 2011.
- £811 million under management.
- £76m distributed during the pandemic on behalf of NET.
- CFLM work closely with neighbouring partners in Cheshire, Manchester and Cumbria, as well as other Community Foundations to effectively deliver funding outside its core areas.



CFLM impact

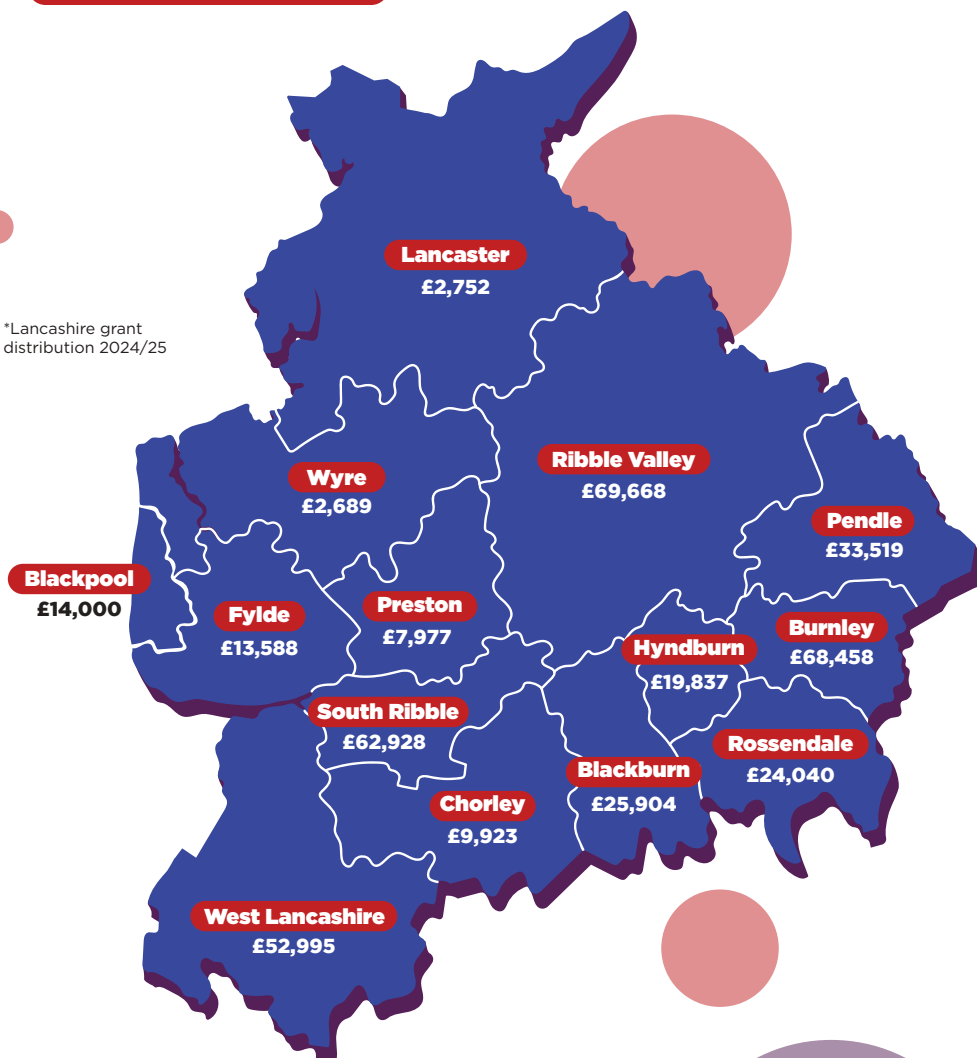
**Distributed in excess of
£77m to enhance the
lives of others.**

£20 million in Lancashire.

£53.6 million in Merseyside.

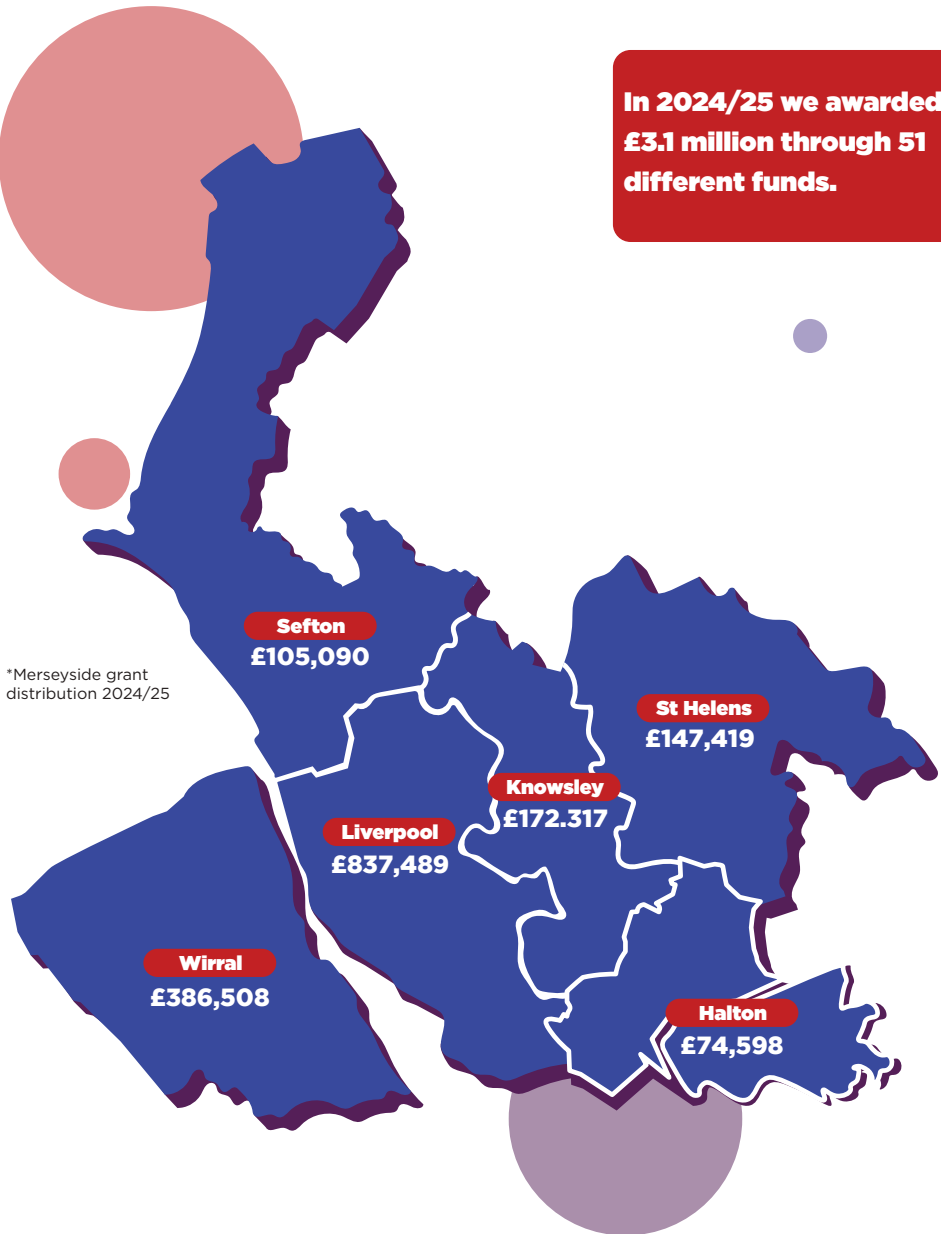
£3.4 million elsewhere in the UK.

*Lancashire grant
distribution 2024/25



To find out more
about CFL impact visit:
www.lancsfoundation.org.uk

**In 2024/25 we awarded
£3.1 million through 51
different funds.**



*Merseyside grant
distribution 2024/25

To find out more
about CFM impact visit:
www.cfmerseyside.org.uk

Who chooses to work with CFLM

On average CFLM manages 51 active funding programmes a year. The source of funding for these programmes comes from a diverse range of donors including HNWI's, families, trusts, the public and private sector. They include notable high-profile names and organisations.

● **HNWI's & Families**

Jamie Carragher, Sir Terry Leahy, Sir Michael Bibby.

● **Charitable Trusts**

Pilkington Charities Fund, John Goore Charitable Trust, Fred Mill Trust, Liverpool Ladies Institution, Cells Charitable Trust, St Christopher Charitable Trust, National Emergencies Trust, WO Street.

● **Corporates & Businesses**

Liverpool ONE, Hill Dickinson, Santander, B&M, Nationwide, Shop Direct, Uber, Anchor Butter, United Utilities, Peel Ports, RWE Innogy, Medicash, Evelyn Partners, Marsden Building Society, MHA, Rathbones.

● **Public Sector**

Home Office, Department of Culture, Media and Sport, Ministry of Justice, Merseyside Police, Police Crime Commissioner, Liverpool City Council, Metro Mayor, Lancashire County Council, Wyre & Fylde Council, Rossendale Council, Sefton Council.

CFLM partners and supporters

A network of high profile individuals, community leaders and local businesses support the work of CFLM, raising our profile within the private sector and ensuring we stay connected to the issues on the ground.

Patron



Cherie Blair CBE, KC

Presidents



Mark Blundell
Lord-Lieutenant of
Merseyside



Amanda Parker
Lord-Lieutenant of
Lancashire

Ambassadors



Edwin Booth CBE DL
Executive Chairman of
EH Booth & Company Ltd



Marc McLoughlin
CEO of Orca Finance



Ram Gupta
CEO of Nybble IT

● Lancashire Investors in Community

Lancashire Investors in Community is a dynamic initiative that brings together purpose-driven local businesses committed to creating lasting change in Lancashire.

Our members share a common belief;
by working collectively, we can make a meaningful difference in the lives of people within our communities.

BOOTH'S
FOOD, WINE AND GROCERY

 **Bigtank**


BROWSHOLME

PMCM

BACKHOUSE JONES

 **Male Allies UK**

 **EnviroSystems**
Sustainable Technology Solutions

Financial Affairs

 **IoT Horizon**
Smart City Solutions

 **marsden**
BUILDING SOCIETY

 **HD**
hambleton solutions
we make it possible

FORT VALE

JAMES HALL & CO
ESTD 1888

 **nybble**

 **mha**

ARCA
Killer finance for growing businesses

NORI[®]
HR & EMPLOYMENT LAW

wepa

seriun

 **The Business Partnership**
Central & Local Government

 **University of Lancashire**

 **CKS**
CONSTRUCTION KITCHEN SERVICES

Workhouse
Creative Marketing

 **Porsche Centre Preston**

senseco
Fire • Sprinklers • Suppression • Security

Guide Security
CCTV • Access Control • Intruder • Fire • Burglary • Vandalism

 **TPP**
The People's Project

● Community Insight Partners

VS6

 **LCVS**
TOGETHER FOR LIVERPOOL FOR GOOD

dsc
directory of social change

Why partners work with CFLM



Reputation management



Speed of response



Proven track record of delivery over 25 years



Strong governance



Multidisciplinary team of experts in charitable sector



Respected locally and nationally



Connectivity and insight to the community



Robust grant making service



Custodians of legacy



Evidencing impact

What do CFLM partners say?

“

My foundation's named 23 Foundation, after my shirt number. The idea of the foundation started in 2009 when I played my testimonial game for Liverpool and decided to donate the proceeds to charity. The original idea was to help young people across Merseyside, since then it's grown arms and legs and helps a range of people.

I decided to work with the Community Foundation because I was still playing at the time and setting up a charity was a lot more complicated than I first thought. It is vital you get the right help and support, for me, there is no one better in Merseyside than the Community Foundation.

The advantages of working with the Community Foundation are it saves time and it is not my area of expertise. Mine is supposedly football, some people would question that, so the expertise of the team running CFLM has been a massive help.

I would recommend the Community Foundation to any other donor out there who's thinking of setting up their endowment fund, and the big reason why is the legacy.

My favourite thing about working with the Community Foundation is the due diligence checks, the process is thorough. When we give funding to projects, it's not just about handing the money over and that's the end of it, they have to report back and provide evidence.

”

Jamie Carragher

LFC Legend & 23 Foundation Founder

“

The Southport Strong Together Appeal, led by the Community Foundation for Lancashire and Merseyside (CFLM) in partnership with local authorities and charities, provided vital and rapid support to the families and wider community affected by the Southport tragedy. The National Emergencies Trust was proud to assist by raising awareness, advising on fund distribution, and connecting key stakeholders.

Responding to emergencies of any scale requires a collective effort, bringing together diverse skills, resources, and expertise that no single organisation can provide alone. The collaboration between CFLM, regulatory bodies, the Trust, and giving platforms was nothing short of remarkable. Everyone worked collaboratively to prioritise the needs of those affected, ensuring help was delivered swiftly and compassionately.

Working with Rae and her team was an absolute pleasure. Their professionalism, clear communication, and mutual trust ensured a seamless response. Their drive and passion to go above and beyond to support their local community in its time of need was truly inspiring. It was a privilege to be part of such a unified effort, helping to deliver essential support to those impacted when it was needed most.

”

Mhairi Sharp

CEO, National Emergencies Trust

What do CFLM partners say?

“

The benefits of working with the Community Foundation are their sheer knowledge and expertise, far superior to anything that we would have within our own organisation. Building fundamental relationships over a very extensive network across the Liverpool City Region, helping us ensure that we reach the people that need our help the most.

Liverpool ONE Foundation exists primarily to support young people with their mental well-being and health. We've seen a huge increase in the number of community groups and charities that require our help, but Community Foundations's ability to help us navigate the number of applications and requests has been critical to the success of the foundation.

The knowledge, the expertise and the professionalism of the team at the Community Foundation has been fantastic. We could not have achieved what we have since the fund began in 2009, if it hadn't been for the people behind the service.

The team are very passionate about the cause, and they've helped us to support a huge number of organisations across Halton, St. Helens, Sefton, Liverpool, Wirral and Knowsley. We just couldn't have delivered that in house without their support.

”

Donna Howitt

Place Strategy Director Liverpool ONE

“

Some months after my wife's death, I suggested to my financial planner at FPC I would like to set up some form of Charitable Foundation with the aim of helping small startup charities in the Burnley area, from where Chris, my wife, and I originated from, met and got married.

I wanted this to commence on the first anniversary of my wife's death. FPC set up a meeting with Rae and Karen at CFLM, as she suggested it would be a better and more efficient way of operating the Foundation, rather than undertaking all the future administration myself.

We eventually met, and I was instantly impressed with their presentation, giving me many details of how the Foundation would operate, including visits to analyse projects, their suitability for being issued a grant, presenting potential bidders each year to our panel and advising with their extensive knowledge.

Our panel consists of my daughter, son, Moira [from FPC], two representatives from CFLM and myself. It has been wonderful to involve my children right from the beginning.

Each year, we are presented with the current valuation of the fund after making the various donations, and we have been delighted that the capital in the fund has hardly reduced.

At the end of 5 years, CFLM presented a full colour brochure of the performance of the Foundation, including how much we had donated, how many organisations had benefited and an estimate of how many individuals and their families had been impacted.

The whole ongoing process has been incredibly gratifying from a personal viewpoint, knowing how many disabled and under privileged people we have helped, and will continue to help for many years to come. Also to know my children are involved and will continue to be so, and hopefully one or more of my grandchildren will eventually become involved.

”

Allan Webster

Founder of Christal Foundation

How to partner with us?

Our experienced team have the expertise to help you make informed decisions around charitable giving, whilst ensuring your investment makes a difference to those who need it most.

We connect our clients to grass roots community groups who are seeking funding, offering bespoke advice, combined with a full support service, which ensures sound management and due diligence, making giving easy, tax-efficient and robust.

All you need to do is get in touch and talk to one of our team, we can walk you through the rest.

● **Personal Giving**

We work with many families and individuals who are passionate about charitable giving and want to make a difference. We have the expertise to ensure your charitable giving requirements are met, helping those causes closest to your heart.

● **Corporate Giving**

We provide bespoke support, helping you to develop and deliver the social element of your ESG strategy. Wherever you are on your planning cycle, we are there to provide expertise and guidance at every stage, ensuring you can evidence the impact you make.

● **Professional Advisers**

We work in partnership with you to ensure your clients have the expertise they need to make informed charitable investment decisions as part of their financial planning. Every client is different, so we look to provide a package bespoke to their needs.

● **Public Sector Funds**

Our experience of managing funds on behalf of the public sector is unsurpassed. We offer bespoke advice and expertise, combined with a professional support service.

● **National Charities**

We have experience of supporting large charities to manage their funds, where reaching grass roots community groups is crucial, timing is of the essence, and due diligence and impact a prerequisite.

A special thank you to all our existing donors

MJ Bibby Fund	Big Local Beechwood, Ballantyne and Bidston
Youth Empowerment Scheme (YES)	Leahy Foundation
Lancashire Women's Fund	Merseyside Women's Fund
RWE Hameldon Hill Wind Farm	The FredMill Trust Fund
Community Fund	1892 Foundation
BHP Billiton Fund	Red Rose Responding Fund
The LF Foundation	The ACC Liverpool Group
Liverpool Spirit Appeal	Foundation
Football For Change Foundation	Mark McQueen Memorial Fund
Merseyside Community Investment Fund	The FPC Foundation
High Sheriffs Trust	Preston New Road Community
The Marsden Building Society Charitable	Benefit Fund
Foundation	Liverpool ONE Foundation- Greener
Merseyside Community Cashback	Futures Fund
Alfred Shaw Trust Fund	Sefton Education & Learning Fund
Liverpool ONE Foundation	Sefton MBC Educational Trust Fund
Hill Dickinson Foundation	Bernie Fleming ALCF
Southport Strong Together Appeal	Shop Direct Fund
Know Your Neighbourhood (KYN)	The Windle United Fund
Preston City Council Adult Social Care	St Christopher's Trust
Prevention and Early Intervention Fund	Lancaster Community Fund
Christal Foundation	Care Leavers Project 2024-2027
Rossendale Community Fund	Lancaster Foundation
23 Foundation	Roy & Louise Rossiter Foundation
Evelyn Partners Fund	Blue Sky Foundation
John Goore	Joseph Harley Fund
Medicash	Halton Foundation
BIBAs Foundation	Olivia Rae Foundation
Mayoral DJ Battle Event	SMBC Taylor Fund
Peel Ports 500 Fund	New Progress Housing
Fort Vale Foundation	Liverpool CC Staff Fundraiser for
Alan Knight Foundation	Our City's Food Banks
Ann and Ray Messer Foundation	

*All listed funds distributed funding in the financial year 2024/25



Rae Brooke

CEO

M: 07515 328 162

E: rae.brooke@cflm.org.uk



Karen Morris

Development Director & Deputy CEO

M: 07973 409 858

E: karen.morris@cflm.org.uk



Tim Mitchell

Senior Development Manager

M: 07860 162 632

E: tim.mitchell@cflm.org.uk

**The Community Foundation for
Lancashire and Merseyside**

www.lancsfoundation.org.uk

www.cfmerseyside.org.uk

Registered company number: 342220

Registered charity number: 1068887

